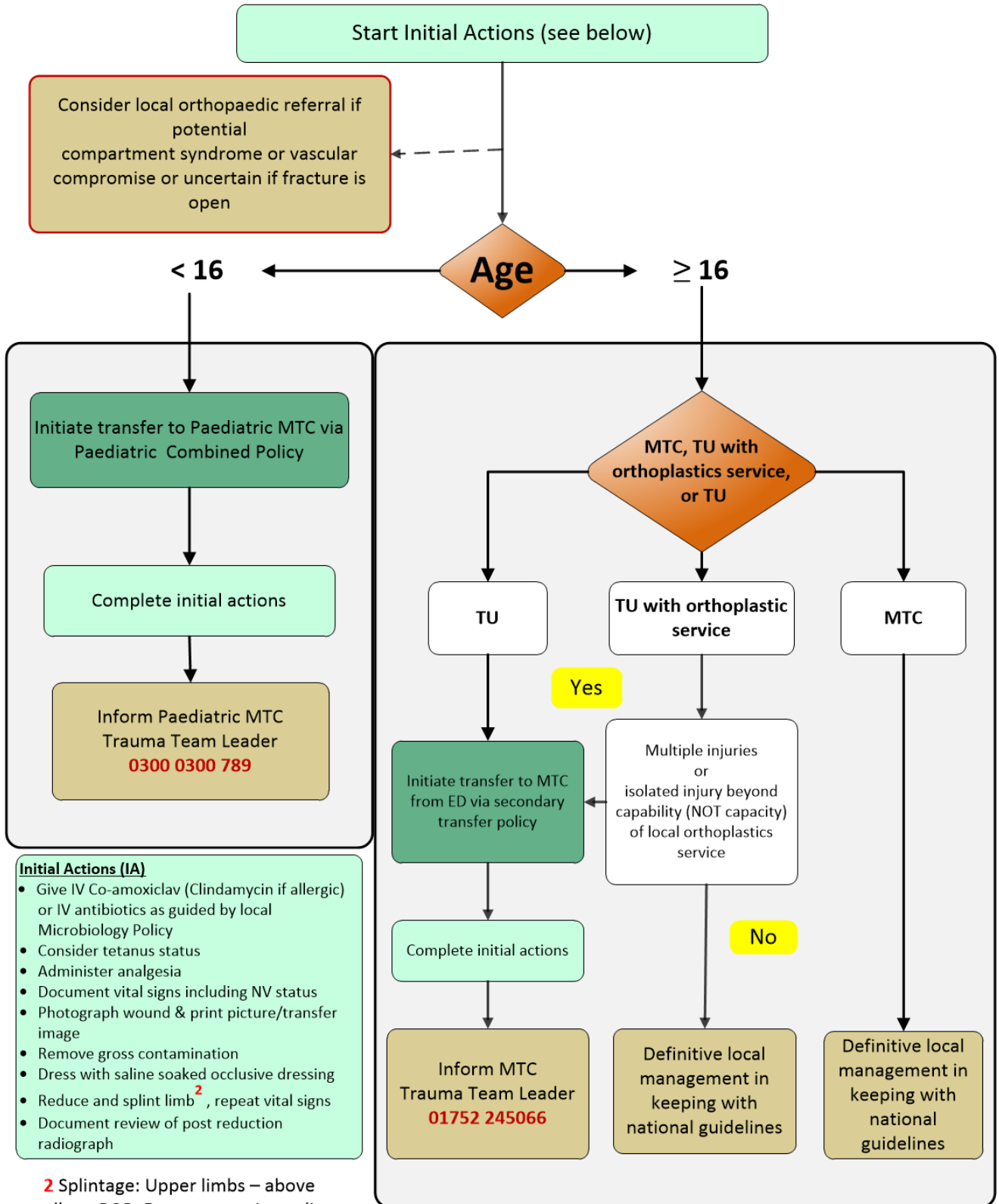


Ref: BOA/BAPRAS Adult Standards for Trauma (Open fractures December 2017), NICE Guideline NG37

## ED Actions for Suspected Open Limb Fracture **1**



**2** Splintage: Upper limbs – above elbow  
POP: Femur – traction splint:  
Below knee – above knee splint/  
POP

**1** \*Long bone, hindfoot or midfoot (excluding hand, wrist, forefoot or digit)